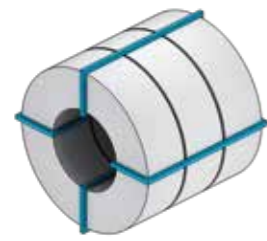
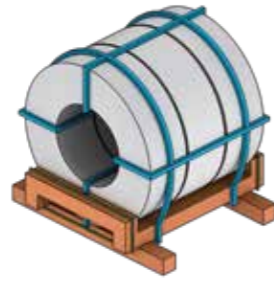


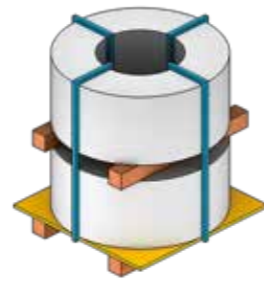
STANDARD PACKAGING
ESEMPI DI IMBALLAGGI STANDARD



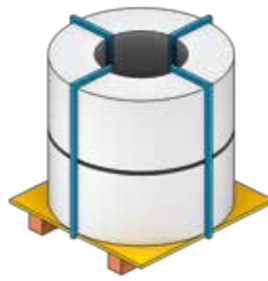
BN1 / C



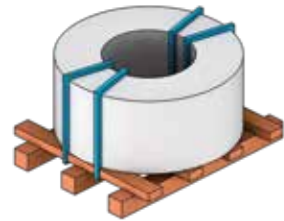
BN2 / C / M



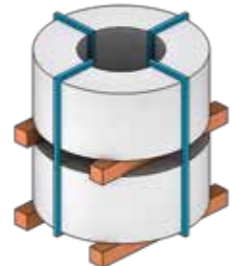
BN3 / 1-2-3-4-5-6



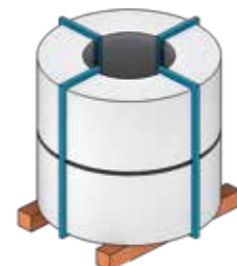
BN4 / 1-2-3



BN6 / 1-2-3-4-5



BN7 / 1-2-3-4-5-6



BN8 / 1-2-3



BN1M

BN1 BN2 BN3 BN4 BN6 BN7 BN8

Eye-to-side <i>Buca asse orizzontale</i>	●						
Eye-to-side cradle <i>Sella asse orizzontale</i>		●					
Eye-to-sky pallet <i>Bancale con piedi e assi</i>			●	●			
Wood pieces <i>Imballo su 2 legni</i>					●	●	
Pallet 8x8 <i>Bancale 8x8</i>					●		
20-mm spacers <i>Distanziali da 20 mm</i>			(1)		(1)	(1)	
40-mm spacers <i>Distanziali da 40 mm</i>			(2)		(2)	(2)	
80-mm spacers <i>Distanziali da 80 mm</i>			(3)			(3)	
Plastic protection for wood pieces <i>Plastica sui legni</i>			(4)	(1)	(3)	(4)	(1)
Plastic film <i>Film plastico</i>			(5)	(2)	(4)	(5)	(2)
Bitumen and poly-coated paper <i>Carta catramata e politenata</i>	(C)	(C)	(6)	(3)	(5)	(6)	(3)
Metal box <i>Cassa metallica</i>	(M)	(M)					

NON-STANDARD
PACKAGING
IS DEVELOPED
ACCORDING TO
CUSTOMER REQUEST

IMBALLI SPECIFICI
SONO STUDIATI
E FORNITI
IN ACCORDO
CON IL CLIENTE

